

CEKETLİ KÜRESEL VANA (ÇELİK)

JACKET BALL VALVE (STEEL)

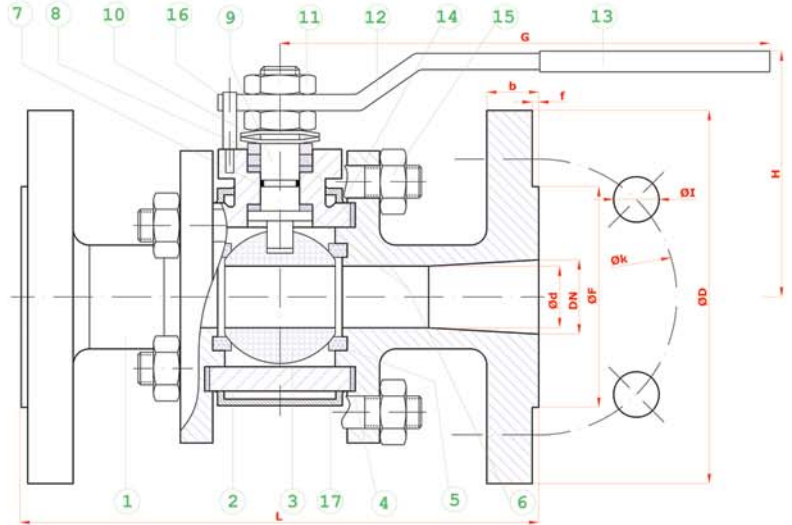
REDÜKSİYON GEÇİŞLİ / FLANŞLI
REDUCED BORE / FLANGED

TİP (TYPE) : BKV-CEK-FL-RG
DN 15 - DN 200

Boyutlar	Dimensions	: EN 558-1
Bağlantılar	Connections	: FLANŞLI / FLANGED PN 16; DIN 2533 // EN 1092-1 FLANŞLI / FLANGED PN 40; DIN 2545 // EN 1092-2
Çalışma Basıncı	Working Pressure	: PN 16 - PN 40
Çalışma Sıcaklığı	Working Temperature	: -30 °C // +180°C
Kullanım Alanları	Usage Areas	: Su, Sıcak Su, Buhar, Basıncı Hava, Asfalt Water, Hot Water, Steam, Pressurized Air, Asphalt



MALZEME BİLGİSİ / MATERIAL DATA		
PARÇA NO / ADET / ITEM NO / PCS	PARÇA ADI / ITEM DESCRIPTION	MALZEME / MATERIAL
17 1	CEKET / JACKET	St 44 .1.4301 / 1.4401
16 1	STOPLAMA PİMİ / STOPPING PIM	St 42 Gal. .1.4301
15 8	SOMUN / NUT	S.6 .1.4301
14 4	SAPLAMA / STUD	Ck 35- Ck 45 .1.4301
13 1	PLASTİK KAPLAMA / PLASTIC COVERING	PVC PVC
12 1	KÜRE HAREKET KOLU / BALL ACTION HANDLE	st 37 .1.4301
11 2	KONTRA SOMUN / COUNTER NUT	S.6 Gal. .1.4301
10 2	ÇANAK PUL / BOWL WASHER	50 Cr V 4 .1.4301
9 1	HAREKET MİLİ / ACTION SPINDLE	1.4021 .1.4301 / 1.4401
8 1	BASKI RİNGİ / PRESSURE RING	MS 58 *
7 1	MİL O-RİNG / SPINDLE O-RING	VİTON VİTON
6 2	BOĞAZ SIZDIRMAZLIK TEFLONU / NECK TIGHTNESS ELEMENT	PTFE-Teflon PTFE-Teflon
5 2	KÜRE SIZDIRMAZLIK TEFLONU / BALL TIGHTNESS ELEMENT	PTFE-Teflon PTFE-Teflon
4 2	GÖVDE SIZDIRMAZLIK TEFLONU / BODY TIGHTNESS ELEMENT	PTFE-Teflon PTFE-Teflon
3 1	KÜRE / BALL	1.4301 / 1.4008 1.4301/4 1.4401
2 1	GÖVDE / BODY	A 216 WCB 1.4301 / 1.4401
1 2	KAPAK / COVER	St 37-2 .1.4301 / 1.4401



TİP (TYPE)	BOYUTLAR (DIMENSIONS)							BAĞLANTI ÖLÇÜLERİ (CONNECTION SIZES)												
	PN 16 - 40							PN 16				PN 40								
	L	G	H	DN	d	f	D	k	Hole Unit	I	F	b	Kg	D	k	Hole Unit	I	F	b	Kg
DN 15	130	150	75	15	12	2	95	65	4	14	45	14		95	65	4	14	45	16	
DN 20	150	150	75	20	15	2	105	75	4	14	58	16		105	75	4	14	58	18	
DN 25	160	150	83	25	20	2	115	85	4	14	68	16		115	85	4	14	68	18	
DN 32	180	180	90	32	25	2	140	100	4	18	78	16		140	100	4	18	78	18	
DN 40	200	230	95	40	32	3	150	110	4	18	88	16		150	110	4	18	88	18	
DN 50	230	275	115	50	40	3	165	125	4	18	102	18		165	125	4	18	102	20	
DN 65	290	275	120	65	50	3	185	145	4	18	122	18		185	145	8	18	122	22	
DN 80	310	320	135	80	65	3	200	160	8	18	138	20		200	160	8	18	138	24	
DN 100	350	380	150	100	80	3	220	180	8	18	158	20		235	190	8	22	162	24	
DN 125	400	450	170	125	100	3	250	210	8	18	188	22		270	220	8	26	188	26	
DN 150	450	450	200	150	125	3	285	240	8	22	212	22		300	250	8	26	218	28	
DN 200	550	650	235	200	150	3	340	295	12	22	268	24		375	320	12	30	285	34	

BATUSAN standartlar içerisinde kalarak; dizayn, konstrüksiyon ve malzeme değiştirme hakkına sahiptir.
BATUSAN has rights to change for desing, construction and material of it's products with respect to standards